



**Covenant of Mayors**  
for Climate & Energy



# **EMPOWERING webinar**

## **Financing solutions for SECAP**

### **Support from the Covenant of Mayors**

**Anja De Cunto, Covenant of Mayors capacity  
building on funding and financing**

**[anja.de-cunto@eumayors.eu](mailto:anja.de-cunto@eumayors.eu)**



# The Covenant of Mayors for Climate & Energy



...brings together **local and regional authorities** voluntarily committed to implementing **EU climate and energy objectives** on their territory.

# The Covenant of Mayors in key figures



**7,200+** signatory cities,

**Incl. 540+** signatories to the new Covenant of  
Mayors for Climate & Energy

**ca. 360** regions, provinces, associations,  
local & regional energy agencies

**35+** Associated Partners



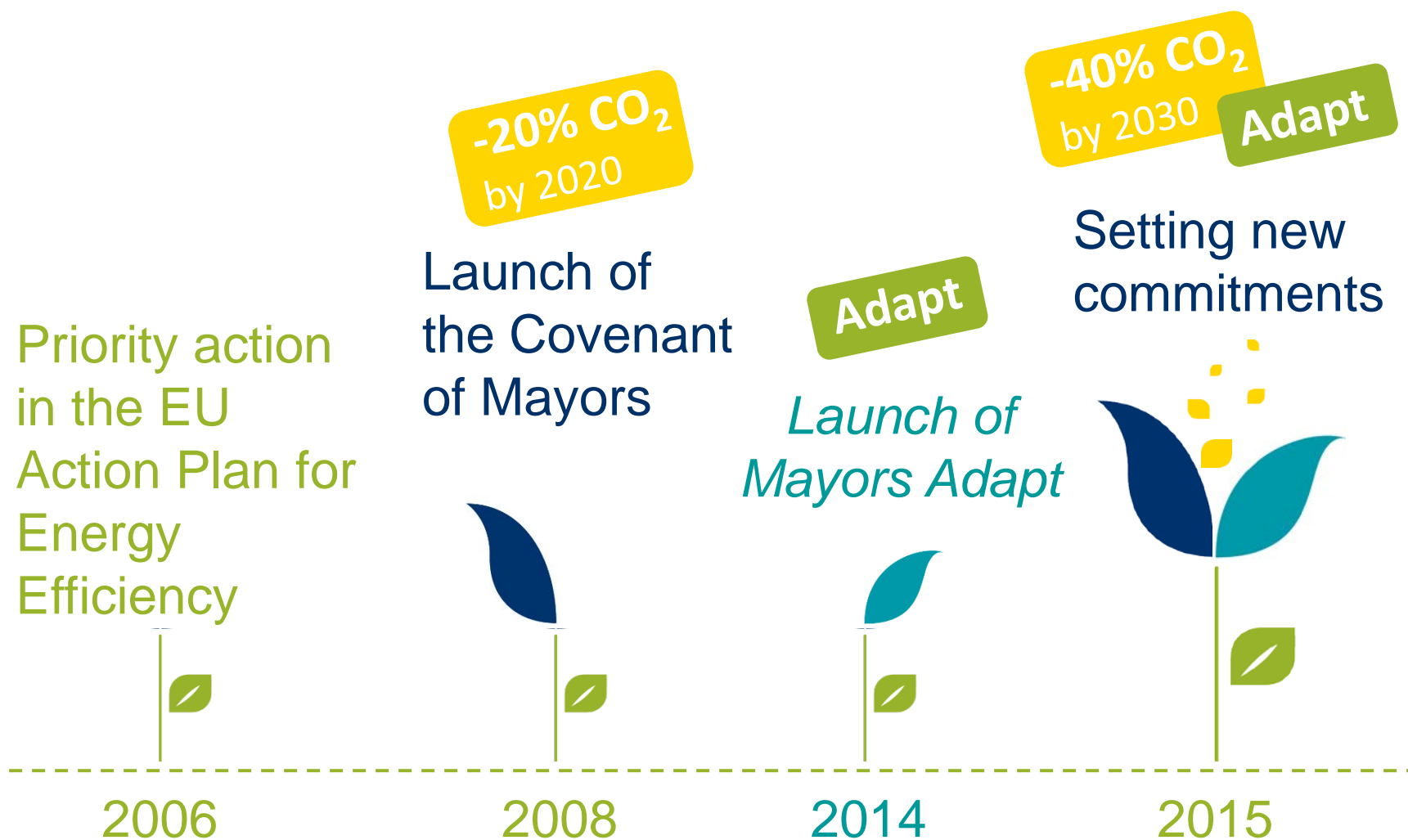
**5,600+**

Action Plans developed



... average CO<sub>2</sub>-emission  
reduction of about **27%**  
by 2020

# Evolution of the initiative



# The Covenant of Mayors going global



2008



Launch of  
the  
Covenant of  
Mayors  
(CoM)

2011



CoM Office  
for Eastern  
Europe

2012



CoM extends  
to South  
Mediterranean  
(CES-MED)

2014



Mayors  
Adapt  
(sister  
initiative on  
adaptation)

2015



New  
framework  
(merger w/  
Mayors  
Adapt)

2016

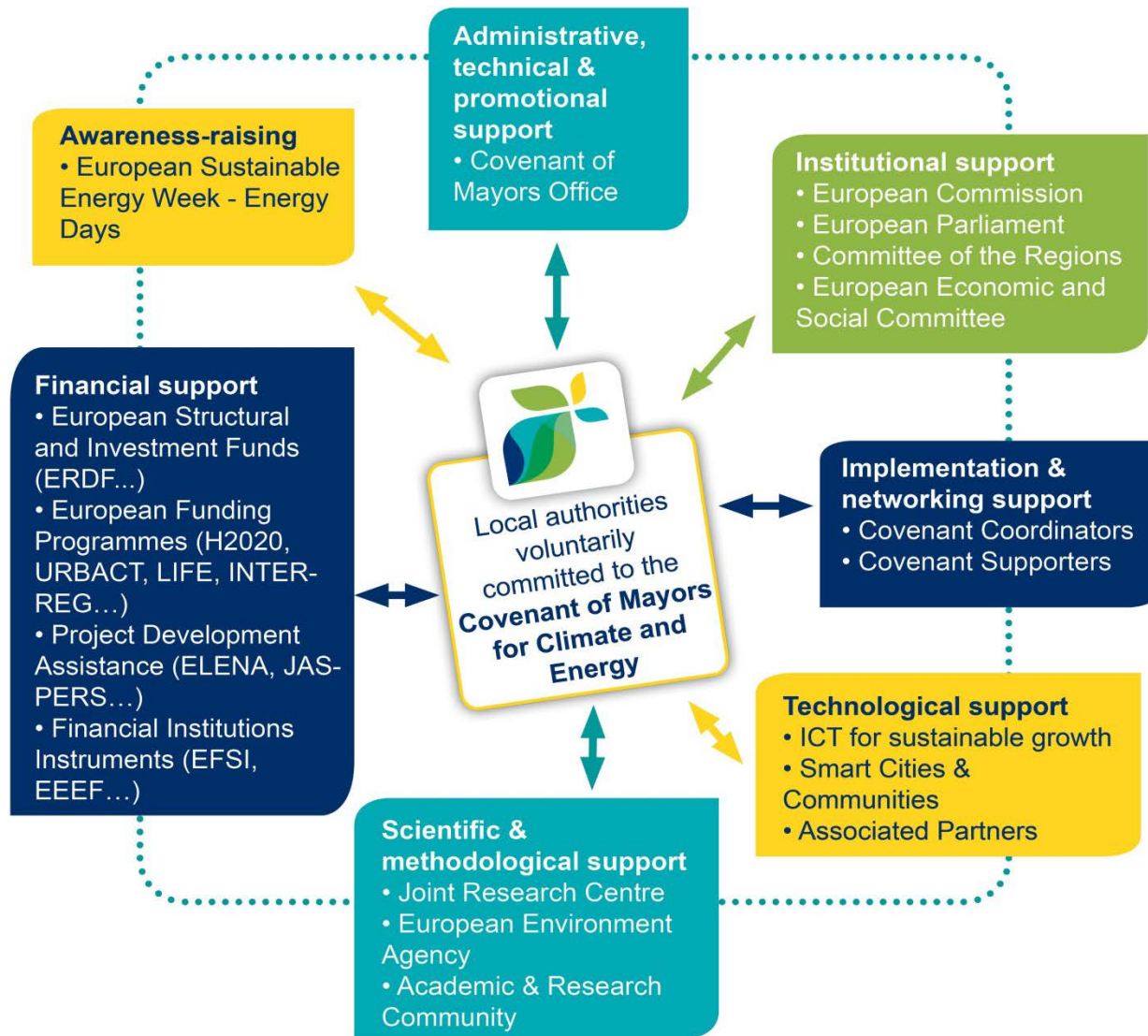


Going  
global!  
CoM Office  
for Sub-  
Saharan  
Africa

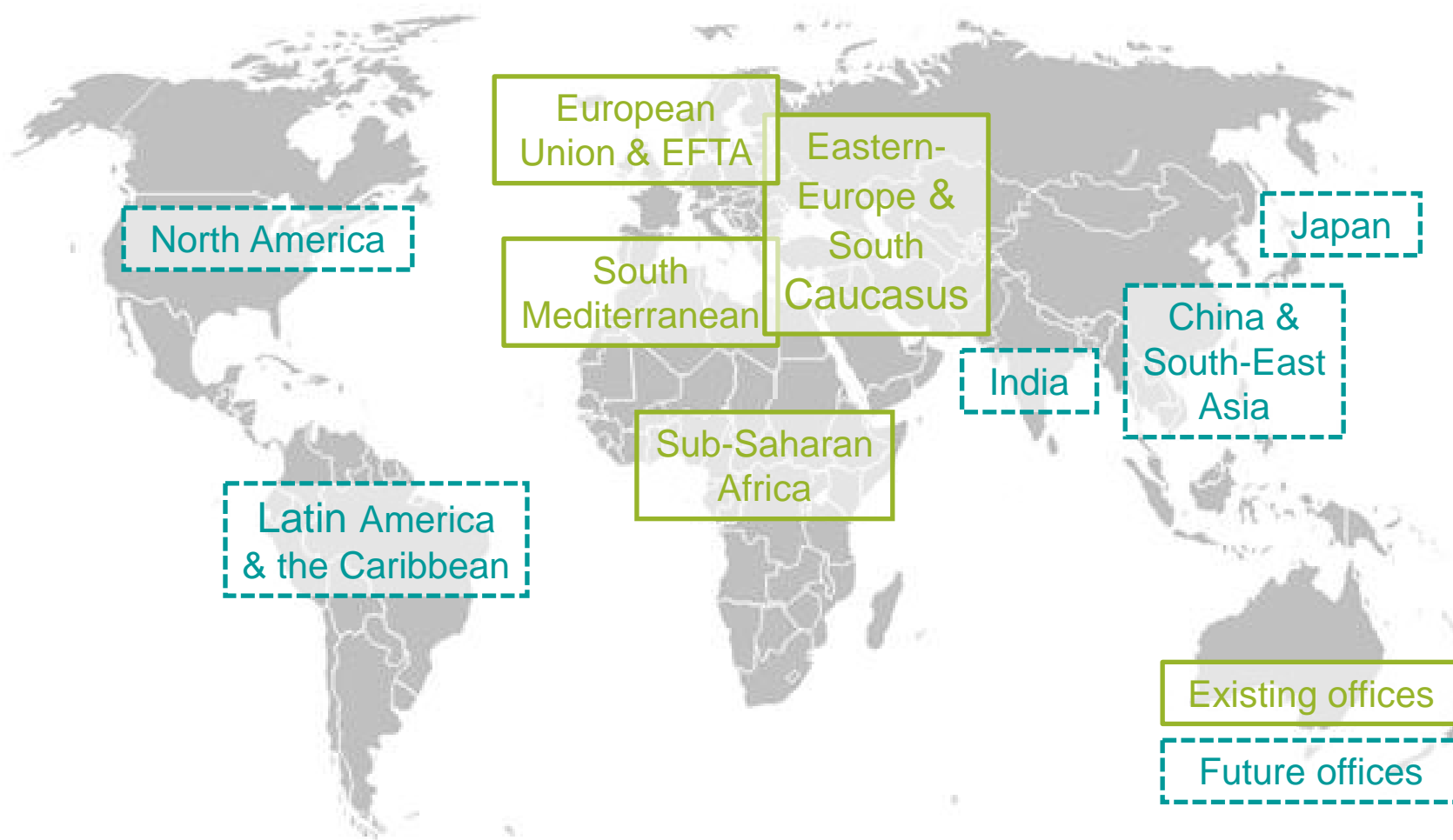
2017

Launch of  
the **Global  
Covenant of  
Mayors** for  
Climate &  
Energy

# Multi-stakeholder involvement



# The Covenant of Mayors going global



# Supporting signatories



## Covenant Capacity-Sharing Corner:

 **Discussion Forums** – Exchange With Your Peers

 **Resource Library** – Search, Add and Rate Resources

[www.eumayors.eu](http://www.eumayors.eu)  
> 'My Covenant'



# Supporting signatories



## Capacity-building events:

- Webinars
- Finance working groups
- Workshops
- City-twinning programme



# Supporting signatories



## Helpdesk

- General helpdesk
- Country-specific helpdesks:  
Italy, Spain, Germany & Austria



# CoMO offers on financing



- Capacity building & knowledge sharing

- to **increase** understanding of **public** available financial **resources**



- to **improve** local authorities access to **public** available financial **resources**

- to **support** wider implementation of **innovative** financial **schemes** & business models



# CoMO offers on financing



- Financing *Coalition of the Willing*
  - to **connect** different EU wide **initiatives** around the topic financing sustainable local actions
  - to **bridge local** authorities **needs** with EU **funding** offerings
  - to **bridge local** authorities **needs** with **financial** institutions offerings

# Interactive funding guide



<http://www.covenantofmayors.eu/support/funding.html>



ABOUT JOIN PLANS & ACTIONS NEWS & EVENTS SUPPORT

## Financing opportunities for Sustainable Energy & Climate Action Plans

Access to financing is key for transforming ambitious Sustainable Energy and Climate Action Plans into projects. The funding page supports the Covenant of Mayors community with clear and practical information on funding and financing opportunities.

The **interactive funding guide** gathers information on the funding initiatives managed by the European Union, the Member States and key financial institutions such as the European Investment Bank. Next to these, the guide includes information about support services and innovative financing schemes.

The **useful links** section collects the most relevant financing publications for the Covenant community including best cases examples and lessons learnt.

## Interactive funding guide

 ▼ ▼ ▼

ADVANCED SEARCH

[Clear all](#)

# Overview



## European Structural and Investment Funds

European Regional Development Fund

Cohesion Fund

European Social Fund

European Agricultural Fund for Rural Development

European Maritime and Fisheries Fund

## European Funding Programmes

LIFE

Urban Innovative Actions

Connecting Europe Facility

URBACT

Territorial Cooperation

INTERREG A

INTERREG B

INTERREG Europe

Horizon 2020

Food & bioeconomy

Energy

Transport

Environment

## Project Development Assistance

ELENA

Project Development Assistance Horizon 2020

JASPERS

European Energy Efficiency Fund Technical Assistance

## Financial Institutions Instruments

European Fund for Strategic Investments

Municipal loans

Natural Capital Financing Facility

Private Finance for Energy Efficiency

## Alternative Financing Schemes

Energy Performance Contracting

Crowd-funding

Citizen cooperatives

Soft loans, guarantees

Revolving loan funds

On Bill financing

Green municipal bonds

- SECAP development
- Hiring of experts / preparation of bankable projects and investments
- SECAP implementation (hard measures)
- SECAP implementation (soft measures, e.g. awareness raising, stakeholders)

Support services

Financial Instruments Advisory (fi-compass)

European Investment Advisory Hub

URBIS

EPEC PPP expertise centre

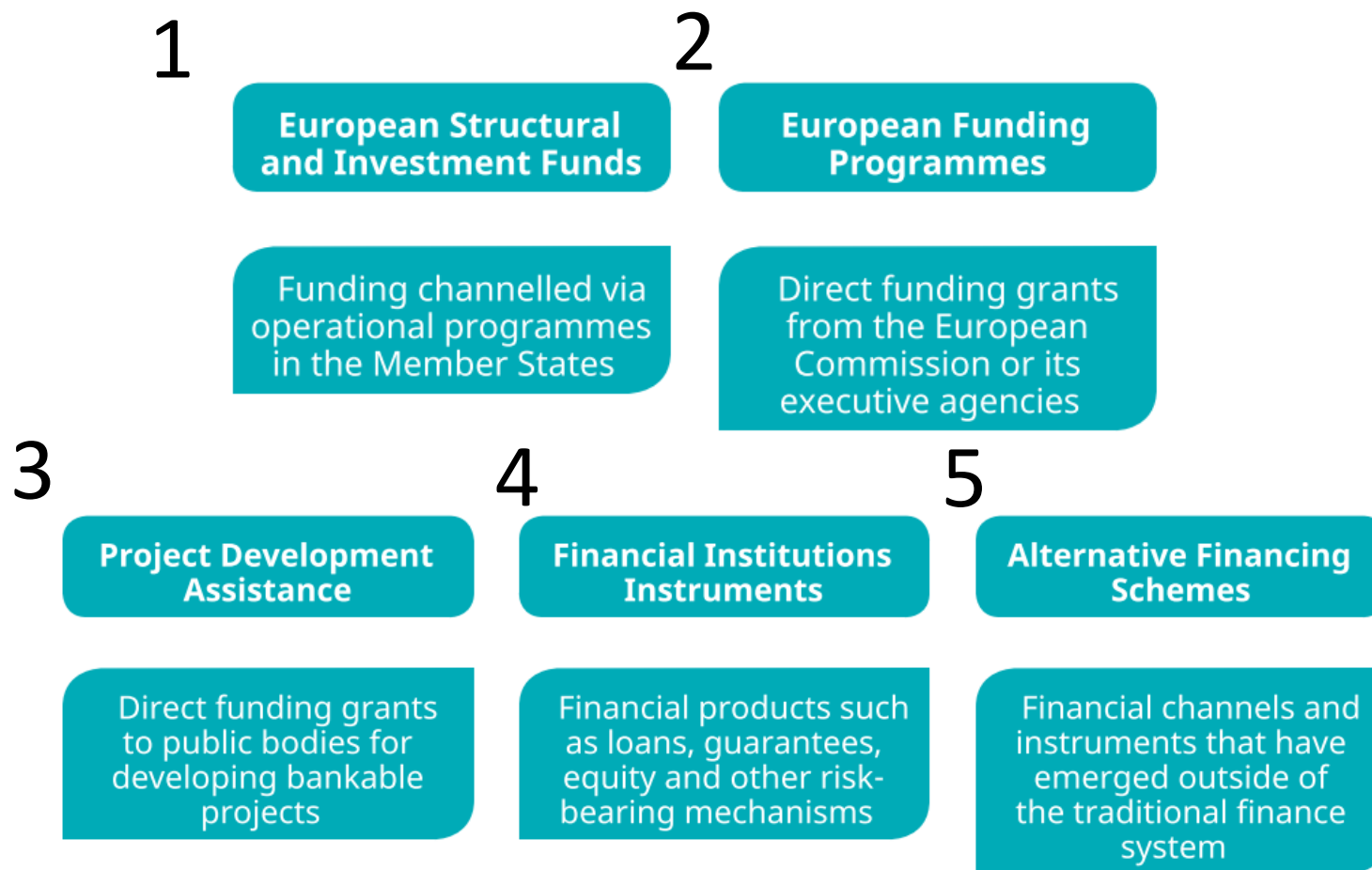
European Investment Project Portal



# What type of info?

- Support to: Signatories, Coordinators, Supporters, Academia
- Support for: SECAP development, Hiring of experts, SECAP implementation (soft measures), SECAP implementation (hard measures)
- Managing structure & coordination
- Funding info
- Type of funding Grant, Financial instrument, Technical assistance, Financial instruments: loan, guarantee, equity
- Co-funding
- Leverage factor
- Project size
- Inspiring examples
- Who can apply
- Useful links

# What type of funding?



# What types of EU Funding exist?



This project is funded  
by the European Union

## EU Member States/regions through OPs

Over 76% of the EU budget is managed by national and regional authorities ESF, ERDF, etc

## European Commission (DGs and Agencies)

Roughly 22% are centrally managed programmes = Horizon 2020, LIFE+, Creative Europe, etc

Grants, Tenders, Financial instruments, ...



EUROPEAN UNION  
STRUCTURAL FUNDS

# European Structural and Investment Funds



**European regional development fund (ERDF)** – promotes balanced development in the different regions of the EU.

[European regional development fund \(ERDF\)](#)

**European social fund (ESF)** - supports employment-related projects throughout Europe and invests in Europe's human capital – its workers, its young people and all those seeking a job.

[European social fund \(ESF\)](#)

**Cohesion fund (CF)** – funds transport and environment projects in countries where the gross national income (GNI) per inhabitant is less than 90% of the EU average. In 2014-20, these are Bulgaria, Croatia, Cyprus, the Czech Republic, Estonia, Greece, Hungary, Latvia, Lithuania, Malta, Poland, Portugal, Romania, Slovakia and Slovenia.

[Cohesion fund \(CF\)](#)

**European agricultural fund for rural development (EAFRD)** – focuses on resolving the particular challenges facing EU's rural areas.

[European agricultural fund for rural development \(EAFRD\)](#)

**European maritime and fisheries fund (EMFF)** – helps fishermen to adopt sustainable fishing practices and coastal communities to diversify their economies, improving quality of life along European coasts.

[European maritime and fisheries fund \(EMFF\)](#)



# The ERDF

supports economic growth, job creation and reduction of regional disparities.

key priority areas:

- Innovation and research;
- Information and communication technologies;
- Competitiveness of small and medium-sized enterprises (SMEs);
- The low-carbon economy.

Urban areas are directly targeted by several of the ERDF investment priorities. This means e.g. greater opportunity for sustainable urban mobility, regeneration of deprived communities and improved research and innovation capacity. In each EU Member State, a minimum 5 % of the ERDF is earmarked for integrated sustainable urban development; its on-the-ground deployment is decided and directed by urban authorities.

Focus areas depend on the operational programmes. In order to be financed by ERDF the project has to be in line with the operational programme for your region/area. Applications can be done to the [national managing authority](#).

It is also possible to use the ERDF in the form of financial instruments. For more info see this [fi-compass fact-sheet](#).

All European Structural and Investment Funds (ESI Funds) including RRDF can be used in integrated packages at local, regional or national level through the use of territorial integrated instruments such as [Community-led Local Development](#) (CLLD) and [Integrated Territorial Investments](#) (ITI).



- EUR 33.25 billion for 2014-2020
- It promotes projects which fill the missing links in Europe's energy, transport and digital backbone
- It contains the call on 'urban nodes' and 'blending call'



- Focus on the call of the 12 “urban partnership of the EU”
- Only public authorities are eligible
- Projects can be up to 5 million and are not transnational



- Part of the ERDF budget
- It focus on Macro-regional Strategies
- Different priorities
- Joint approach to tackle common issues through exchange projects



- EUR 359 million from the ERDF
- Focus on integrated approach to territorial development
- partners must identify a common interest and then work together for 3-5 years.



- EUR 3.6 billion for 2014-2020
- It focus on environment and climate mitigation and adaptation
- It contains calls on technical assistance



# URBAN EUROPE

- to provide relevant solutions and improvement for cities, their inhabitants and businesses.
- Vibrant urban economies
- Welfare & finance
- Urban environmental resilience



- EUR 74 from the ERDF
- Focus on sustainable urban development
- Only public authorities are eligible
- It includes the call 'action planning network'



- EUR 77.2 billion for 2014-2020
- Promotes research and development
- One of the focus is 'Societal challenge'
- It includes the 'smart cities' calls

# Horizon 2020 – energy



## Smart cities and communities

LC-SC3-SCC-1-2018-2019: Smart Cities and Communities

IA between EUR 15 and 20 million, of which between EUR 6 to 8 million per lighthouse city and between EUR 0.5 and 1 million per follower city.

Deadline: 5 Apr 2018. Opening: 5 Sep 2018. Deadline: 5 Feb 2019.

Proposals should include 2 lighthouse cities and 5 follower cities. All lighthouse cities must have a validated SEAP or SECAP (or similar). Projects should have a duration of 48 to 60 months.

## Energy efficiency

- LC-SC3-EE-2-2018: Integrated home renovation services. CSA between EUR 0.5 and 1.5 million. Opening: 25 Jan 2018. Deadline: 04 Sep 2018
- LC-SC3-EE-5-2018: Next-generation of Energy Performance Assessment and Certification. CSA between EUR 1 and 2 million. Opening: 25 Jan 2018. Deadline: 04 Sep 2018
- LC-SC3-EE-6-2018-2019-2020: Business case for industrial waste heat/cold recovery, IA between EUR 3 and 4 million. Opening: 25 Jan 2018. Deadline: 04 Sep 2018.
- LC-SC3-EE-8-2018: Capacity building programmes to support implementation of energy audits. CSA between EUR 1 and 2 million. Opening: 25 Jan 2018. Deadline: 04 Sep 2018
- LC-SC3-EE-9-2018: Innovative financing for energy efficiency investments. CSA between EUR 1 and 1.5 million. Opening: 25 Jan 2018. Deadline: 04 Sep 2018
- LC-SC3-EE-16-2018-2019-2020: Supporting public authorities to implement the Energy Union. CSA between EUR 1 and 1.5 million. Opening: 25 Jan 2018. Deadline: 04 Sep 2018

# Horizon 2020 – PDA



Horizon2020 Project Development Assistance (PDA) is a technical assistance facility. The PDA will support building technical, economic and legal expertise needed for project development and leading to the launch of concrete investments, which are the final aim and deliverable of the project.

Project proposals:

LC-SC3-EE-11-2018-2019-2020: Aggregation - Project Development Assistance  
EU of between EUR 0.5 and 1.5 million. Opening: 25 Jan 2018. Deadline: 04 Sept 2018.

Proposals should focus on one or more of the following sectors:

- existing public and private buildings including social housing, with the aim to significantly decrease energy consumption in heating/cooling and electricity;
- energy efficiency of industry and service;
- energy efficiency in all modes of urban transport (such as highly efficient transport fleets, efficient freight logistics in urban areas, e-mobility and modal change and shift);
- energy efficiency in existing infrastructures such as street lighting, district heating/cooling and water/wastewater services.

This PDA facility focuses on small and medium-sized energy investments of at least EUR 7.5 million to EUR 50 million.

# Horizon 2020 – environment



LC-CLA-04-2018: Resilience and sustainable reconstruction of historic areas to cope with climate change and hazard events  
RIA between EUR 5 and EUR 6 million. Opening: 7 Nov 2017. Deadline: 27 Feb 2018 (First Stage) - 04 Sep 2018 (Second Stage).  
Special condition: Consortia must include at least 3 historic areas from different Member States.

CE-SC5-03-2018: Demonstrating systemic urban development for circular and regenerative cities  
IA in the range of EUR 10 million. Opening: 7 Nov 2017. Deadline: 27 Feb 2018 (First Stage) - 04 Sep 2018 (Second Stage).  
Special conditions: Up to 20 % of the total costs of construction and installation of “infrastructure-targeted” interventions will be eligible for Horizon 2020 funding. Consortia must comprise at least 4 cities from different Member States or Associated Countries.

SC5-11-2018: Digital solutions for water: linking the physical and digital world for water solutions  
IA in the range of EUR 5 million. Opening: 7 Nov 2017. Deadline: 27 Feb 2018 (First Stage) - 04 Sep 2018 (Second Stage).

SC5-13-2018-2019: Strengthening international cooperation on sustainable urbanisation: nature-based solutions for restoration and rehabilitation of urban ecosystems  
RIA in the range of EUR 5 million. Opening: 7 Nov 2017. Deadline: 27 Feb 2018 (First Stage) - 04 Sep 2018 (Second Stage). Opening: 14 Nov 2018. Deadline: 19 Feb 2019 (First Stage) - 04 Sep 2019 (Second Stage).

SC5-17-2018: Towards operational forecasting of earthquakes and early warning capacity for more resilient societies  
RIA between EUR 6 million and EUR 8 million. Opening: 7 Nov 2017. Deadline: 27 Feb 2018 (First Stage) - 04 Sep 2018 (Second Stage).

SC5-19-2018: International network to promote cultural heritage innovation and diplomacy  
CSA between EUR 2.5 million to EUR 3 million. Opening: 7 Nov 2017. Deadline: 27 Feb 2018.

# Horizon 2020 – mobility



LC-MG-1-2-2018: Sustainable multi-modal inter-urban transport, regional mobility and spatial planning  
RIA between EUR 5 and 8 million. Deadline 30 January 2018 (First Stage) - 19 September 2018 (Second Stage)

LC-MG-1-3-2018: Harnessing and understanding the impacts of changes in urban mobility on policy making by city-led innovation for sustainable urban mobility  
RIA between EUR 2 and 4 million. Deadline 30 January 2018 (First Stage) - 19 September 2018 (Second Stage)

MG-2-1-2018: Human Factors in Transport Safety  
RIA between EUR 4 and 8 million. Deadline 30 January 2018 (First Stage) - 19 September 2018 (Second Stage)

MG-3-3-2018: "Driver" behaviour and acceptance of connected, cooperative and automated transport  
RIA between EUR 3 and 4 million. Deadline 30 January 2018 (First Stage) - 19 September 2018 (Second Stage)

MG-4-1-2018: New regulatory frameworks to enable effective deployment of emerging technologies and business/operating models for all transport modes  
CSA between EUR 1 and 2 million. Deadline 04 April 2018.

LC-GV-01-2018: Integrated, brand-independent architectures, components and systems for next generation electrified vehicles optimised for the infrastructure  
IA between EUR 3 and 5 million. Deadline 4 April 2018.

# Horizon 2020 – food&biowaste



CE-SFS-25-2018: Integrated system innovation in valorising urban biowaste  
IA in the range of EUR 10 million. Opening: 31 Oct 2017. Deadline: 13 Feb 2018

SFS-38-2018: Highly efficient management of soil quality and land resources  
RIA up to EUR 5 million. Opening: 31 Oct 2017. Deadline 13 Feb 2018 (First Stage) - 11 Sep 2018 (Second Stage)

BG-02-2018: Blue Bioeconomy Public-Public Partnership  
ERA-NET co-fund of 8 million. Opening: 31 Oct 2017. Deadline 13 Feb 2018

RUR-01-2018-2019: Building modern rural policies on long-term visions and societal engagement  
CSA up to EUR 5 million. Opening: 31 Oct 2017. Deadline: 13 Feb 2018.  
RIA up to EUR 6 million. Opening: 31 Oct 2017. Deadline: 13 Feb 2018 (First stage), 11 Sep 2018 (Second stage). Opening: 16 Oct 2018. Deadline: 23 Jan 2019 (First stage), 04 Sep 2019 (Second stage)

RUR-02-2018: Socio-economic impacts of digitisation of agriculture and rural areas  
RIA up to EUR 5 million. Opening: 31 Oct 2017. Deadline: 13 Feb 2018 (First stage), 11 Sep 2018 (Second stage)

RUR-04-2018-2019: Analytical tools and models to support policies related to agriculture and food  
RIA between EUR 4 and 5 million. Opening: 31 Oct 2017. Deadline 13 Feb 2018 (First Stage) - 11 Sep 2018 (Second Stage)

RUR-09-2018: Realising the potential of regional and local bio-based economies  
CSA up to EUR 3 million. Opening: 31 Oct 2017. Deadline: 13 Feb 2018.

# Thank you!



# PROCUREMENT

- As a strategic tool in  
sustainability context

Fredric Norefjäll,

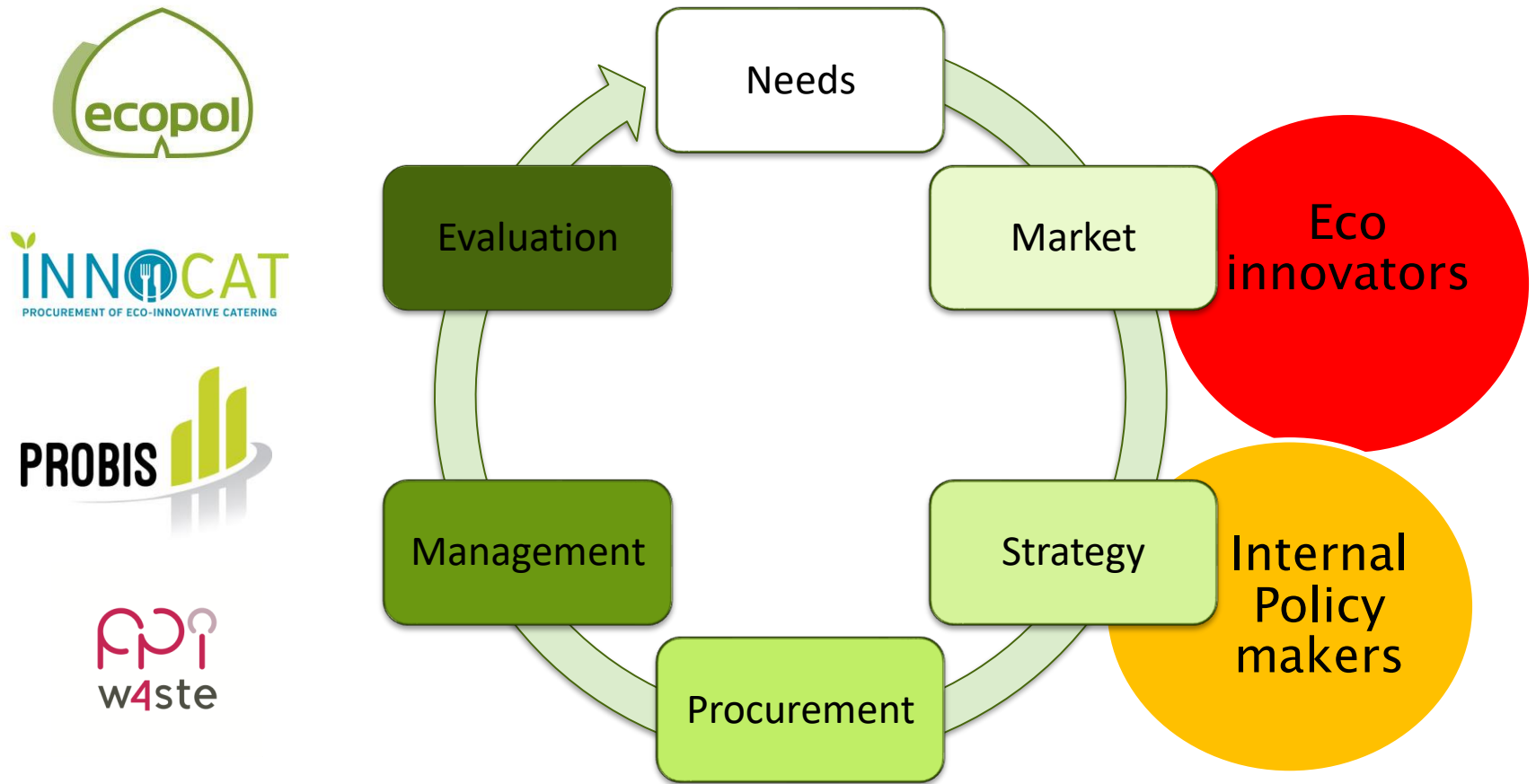
13 march 2018

Research Institutes of Sweden

**Samhällsbyggnad  
Energi & Cirkulär Ekonomi**

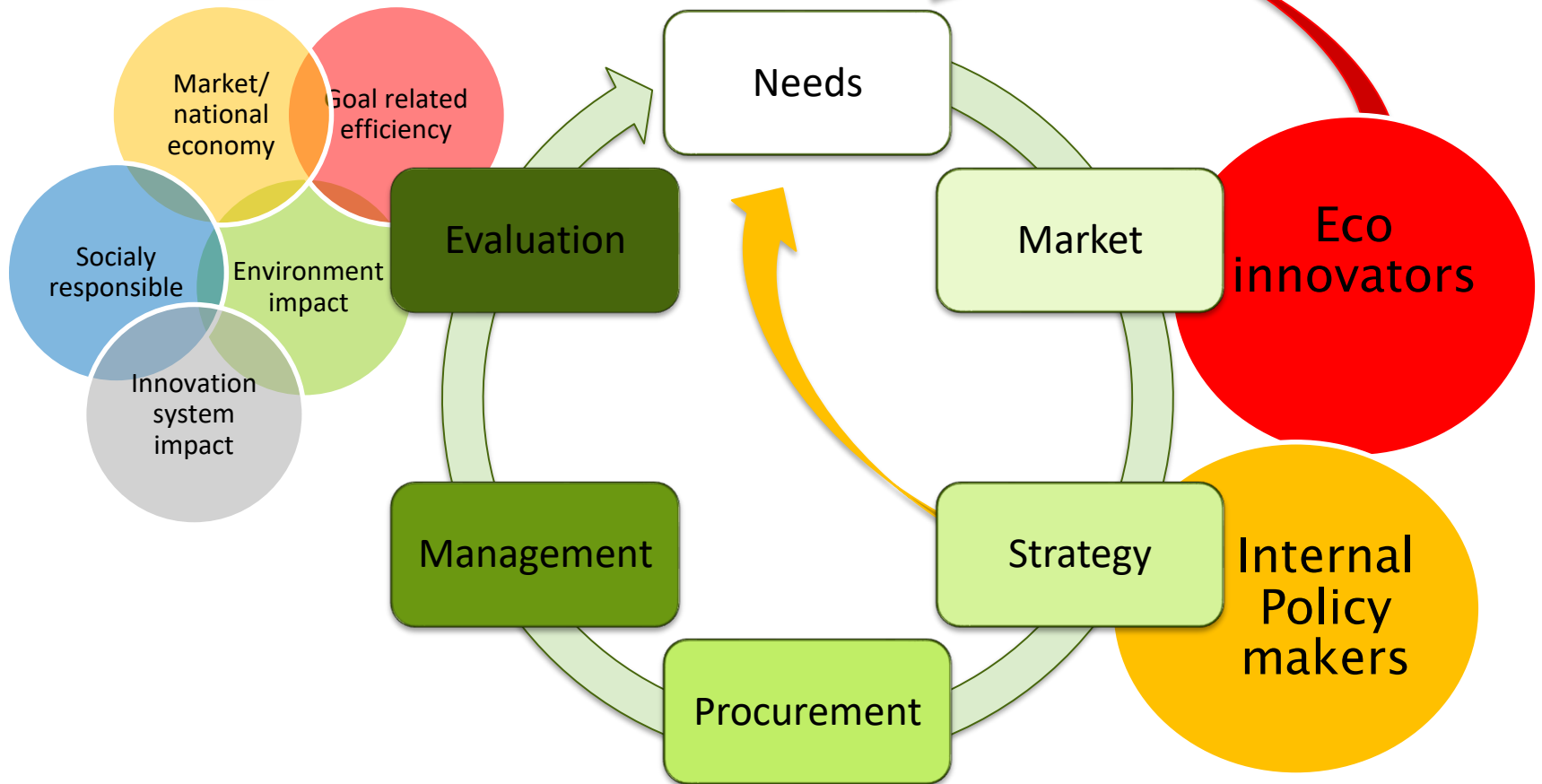


# The procurement process in context



# Policy

Drivers behind the needs



## Vision

Vision

Will

A strategic tool...

Re-think

## Strategy

Build

Alternative

Learn

Decide

## Operations

Evaluate

Method

Needs

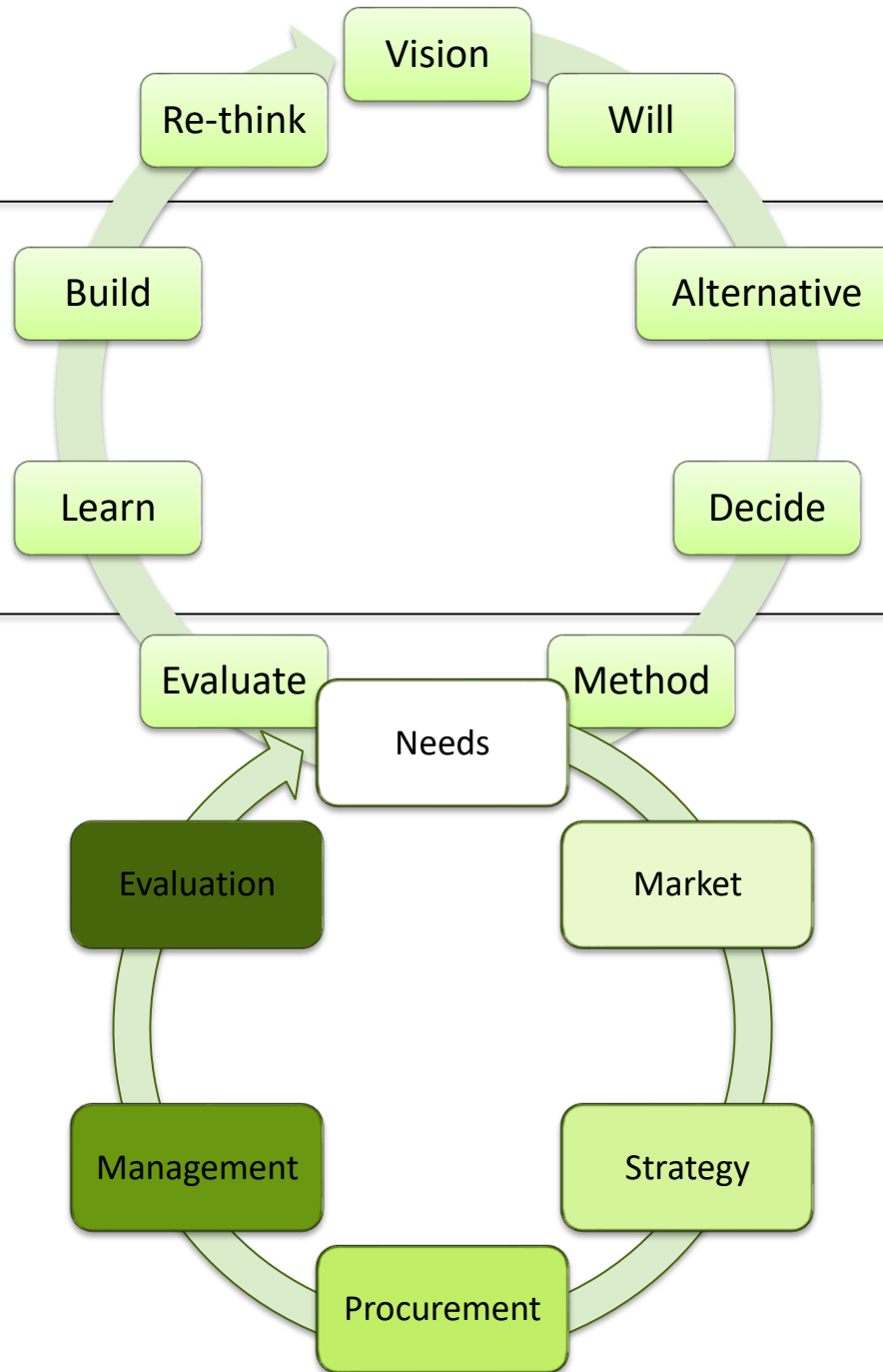
Evaluation

Market

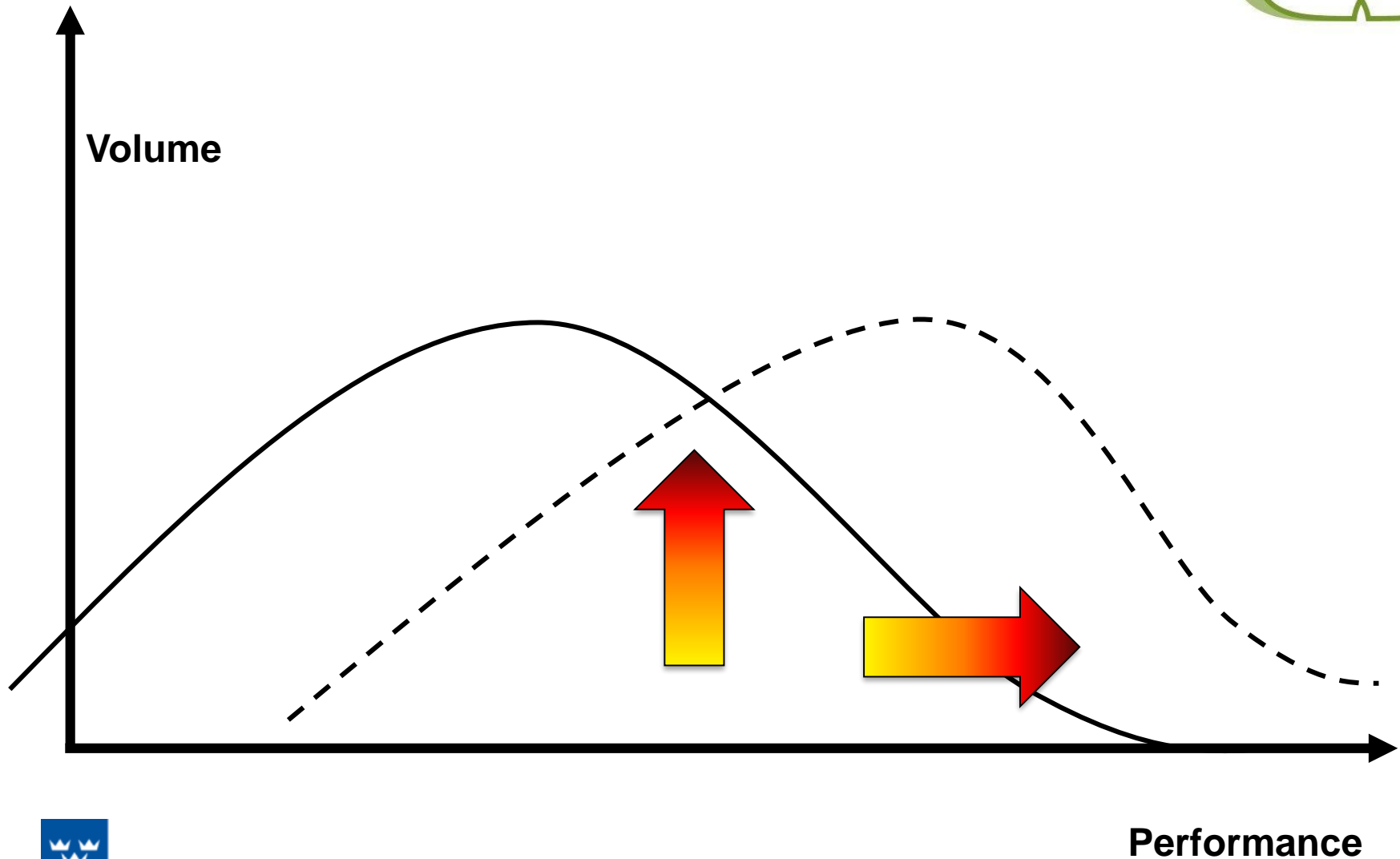
Management

Strategy

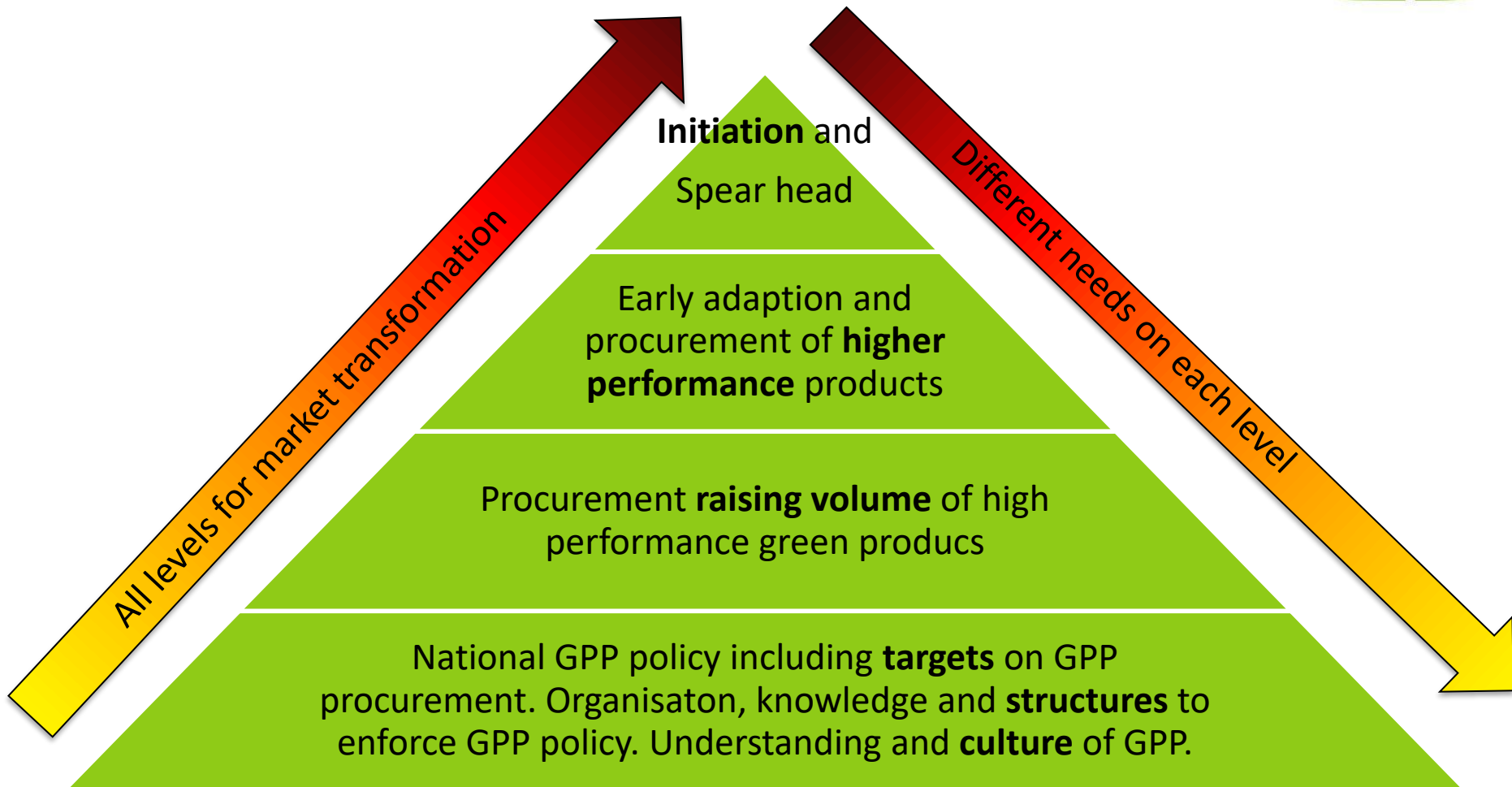
Procurement



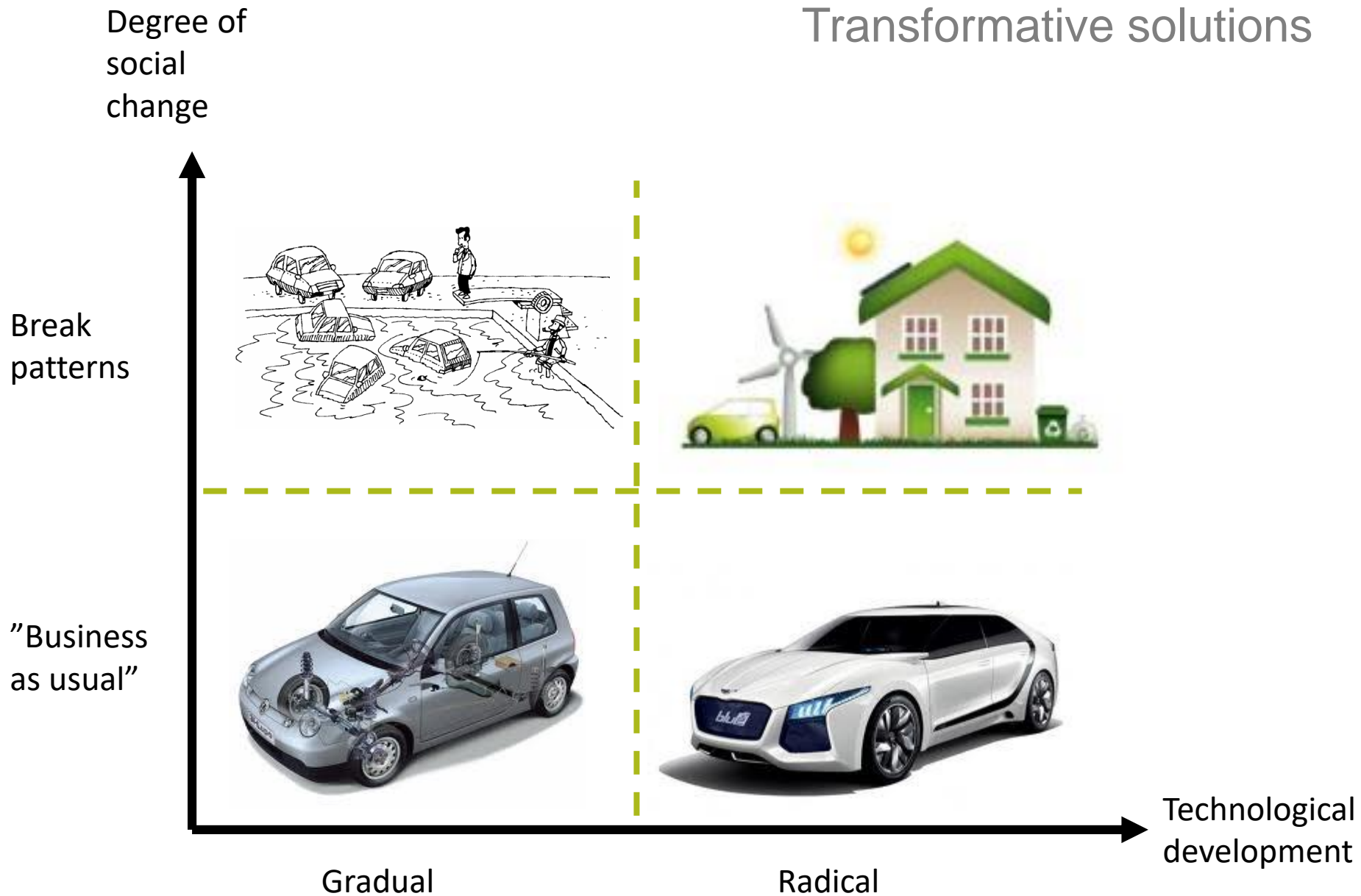
...with market impact...



...demand capacity building.

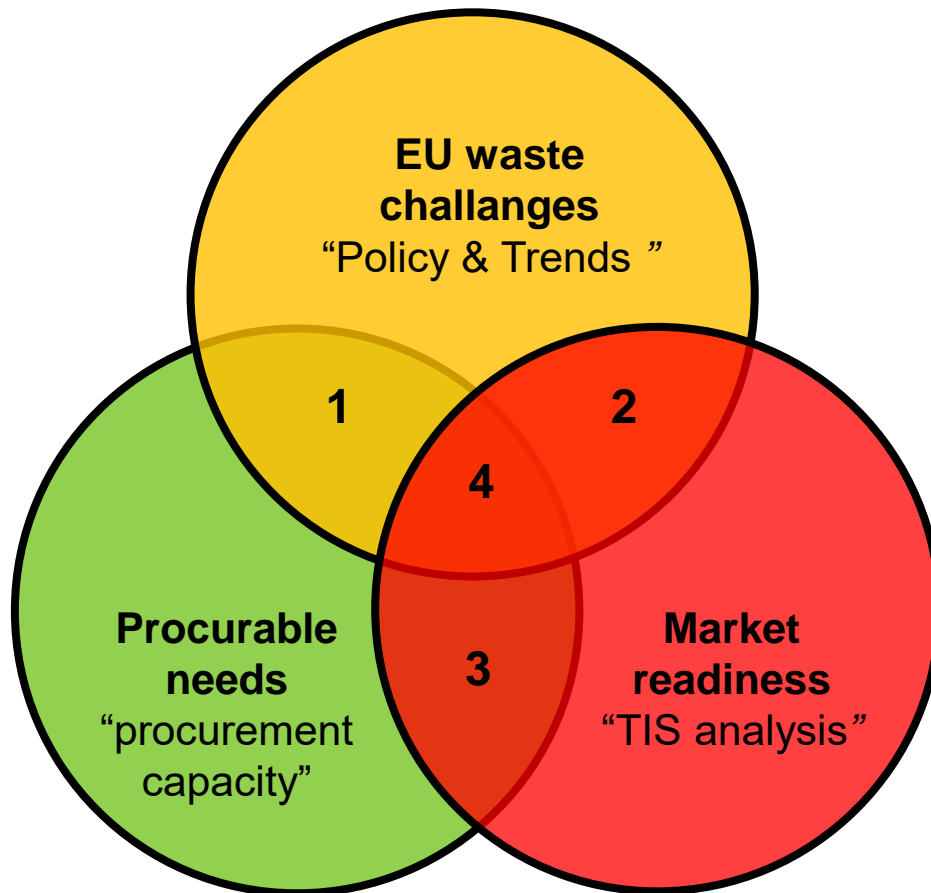


# Transformative solutions



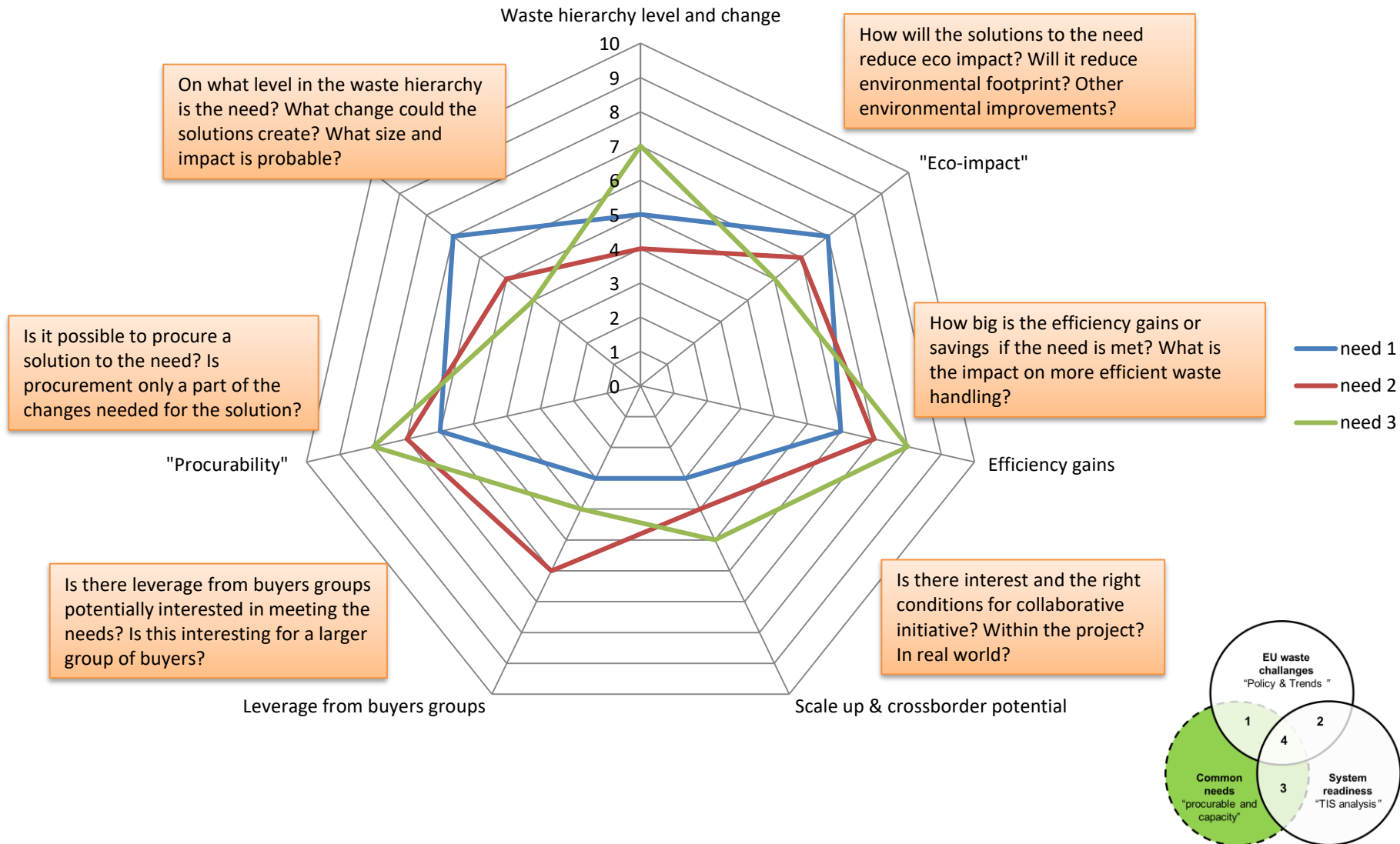
- Identification of societal challenges, public authority mission-related problem or unmet need, performance gap that concern local public service delivery and impact negatively on the quality, sustainability and/or cost of public services offered
- Cross-organizational coordination to bundle the public demand to influence the structure of the supply side (market power) and create incentives for firm to innovate additionally
- Use a methodology to rank-order the perceived needs, evaluated in terms of size, scale and cost of the problem and the potential absorptive capacity of market for diffusion (no uniqueness or tailored features).

# Are there conditions for a successful procurement?



1. **Procurer & EU ambitions aligned**
2. **EU ambitions and market aligned**
3. **Procurers needs & Market aligned**
4. **Possible procurement impact**

# Prioritize aspects of needs

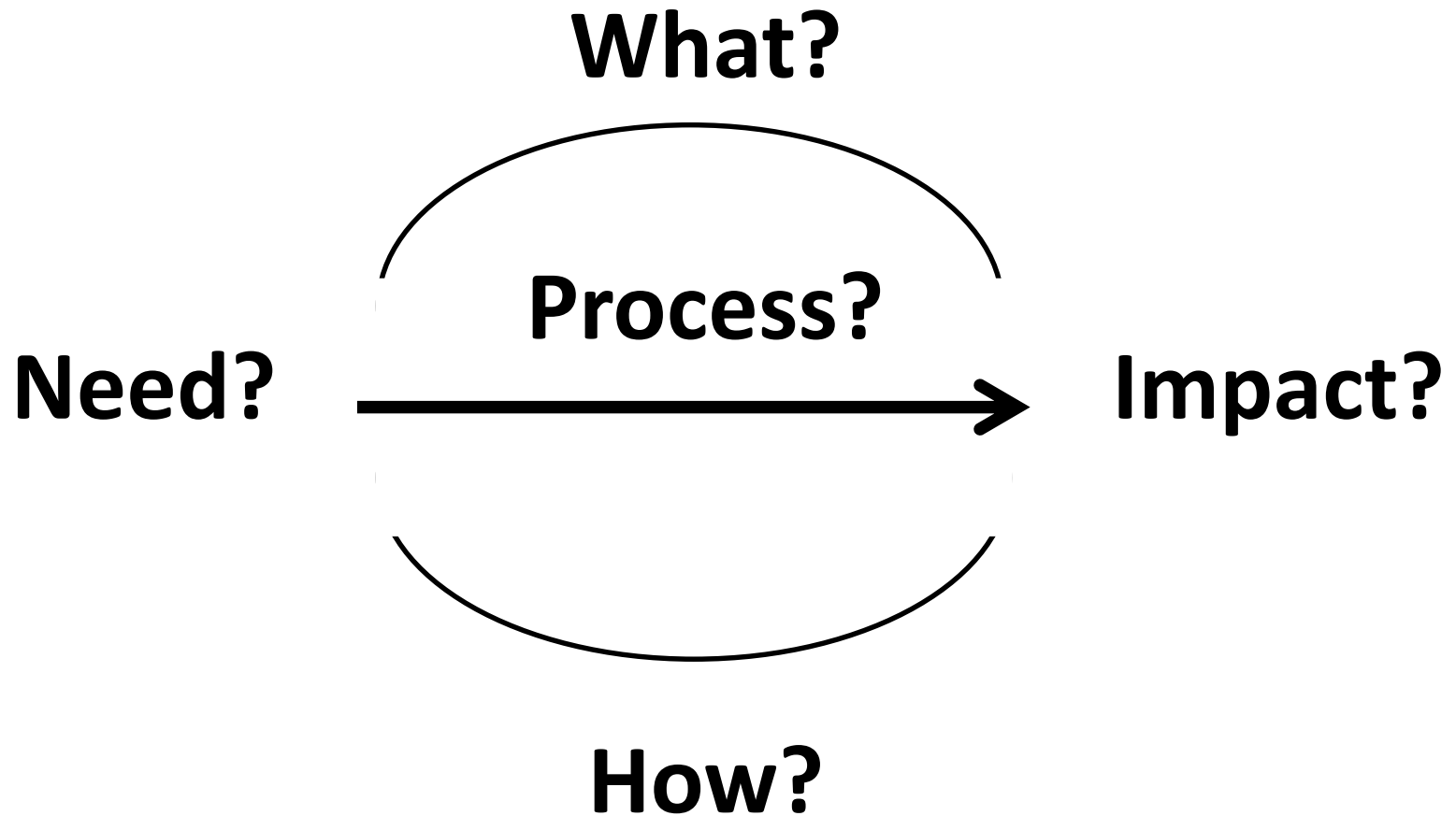


# ICLEI procurement forum

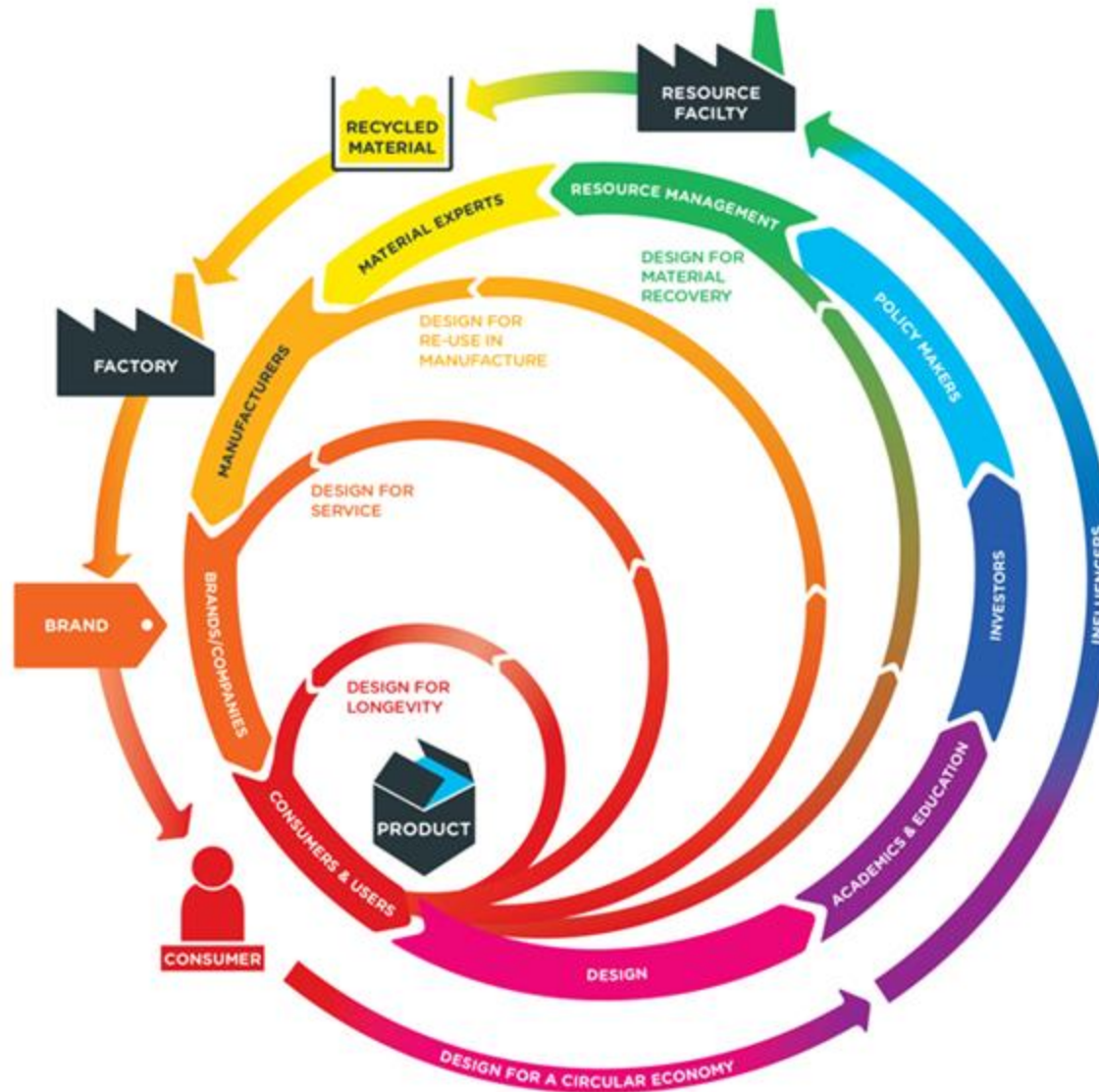


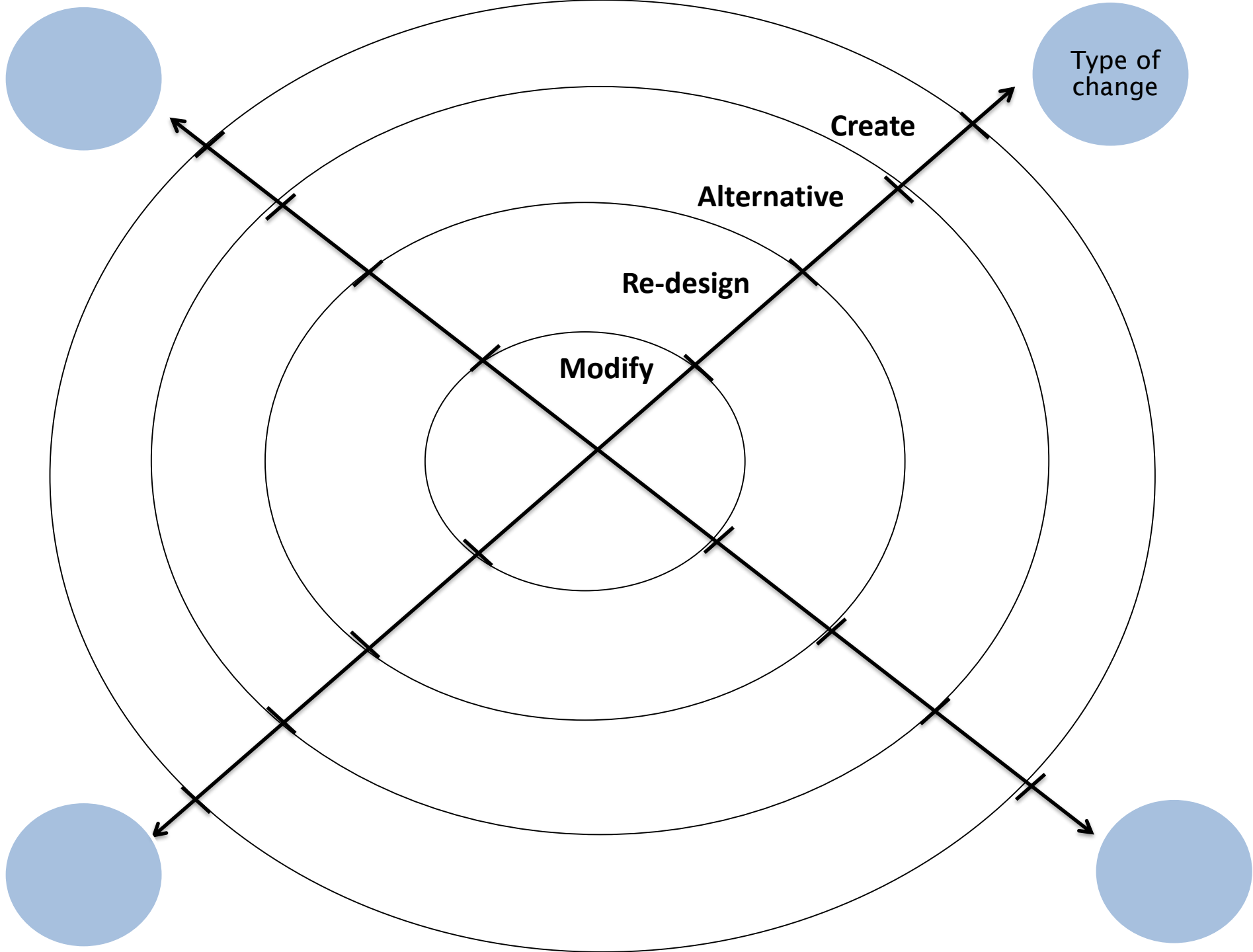
<https://procurement-forum.eu/>

<http://www.sustainable-procurement.org/>

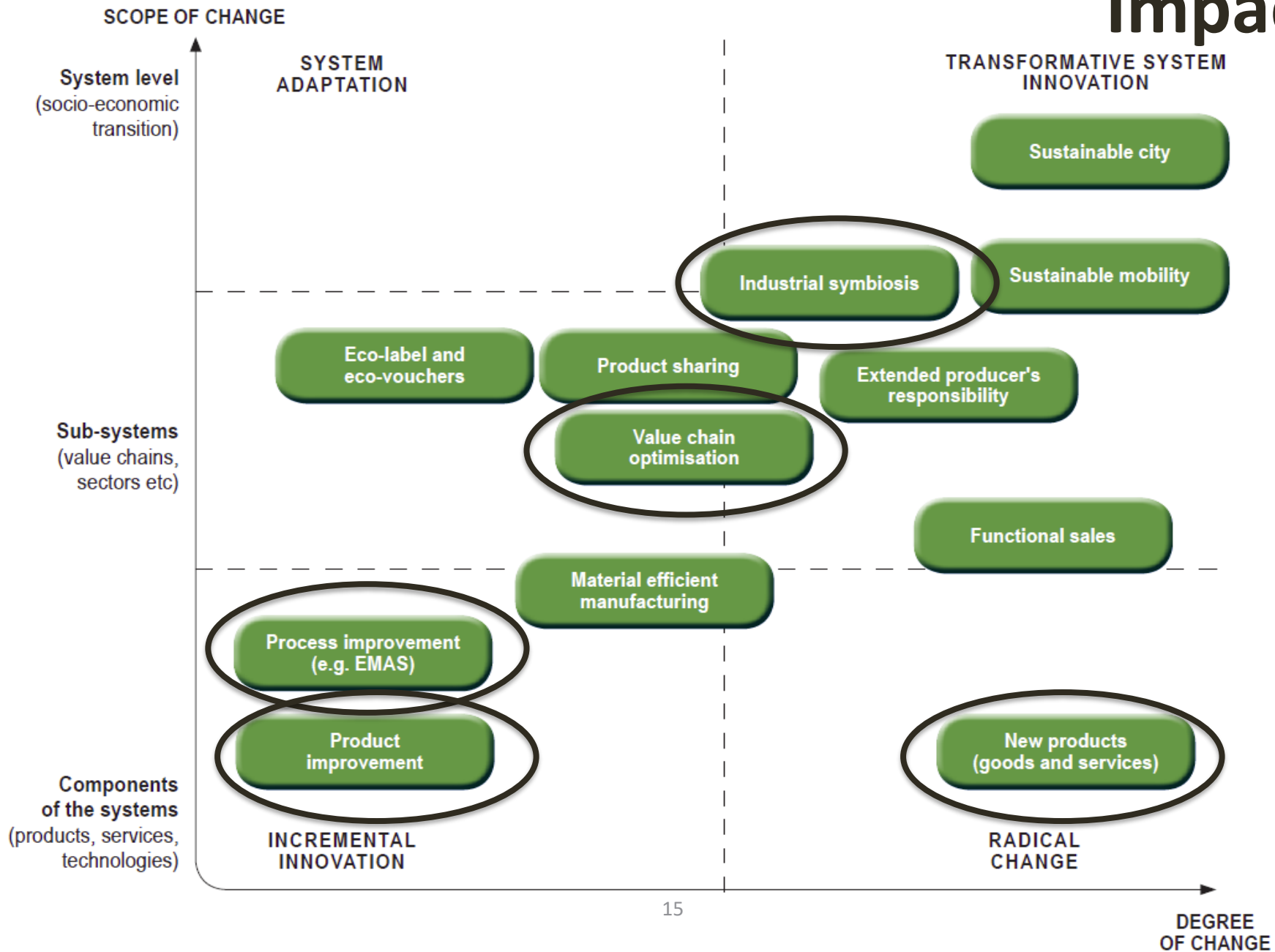


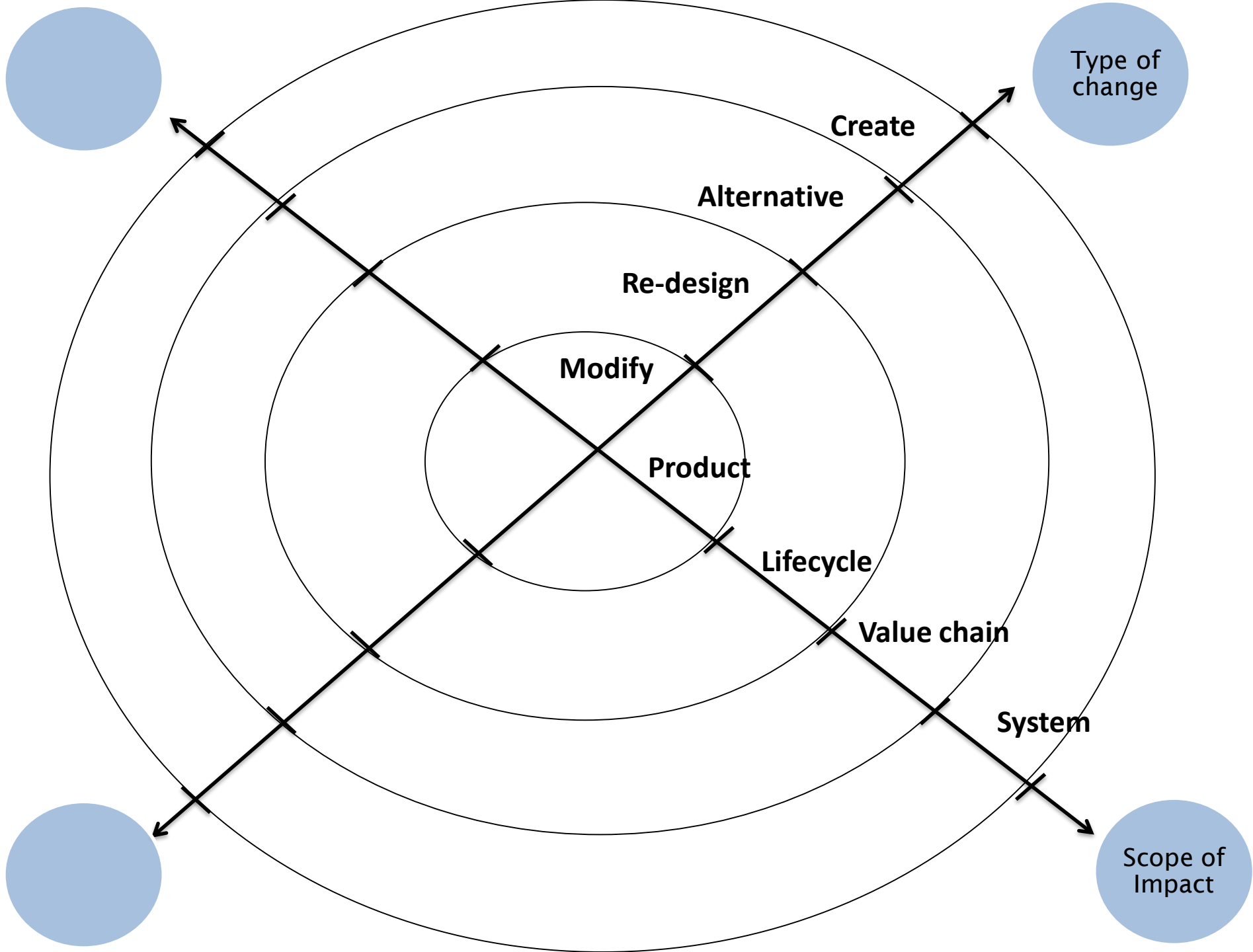
# Need?



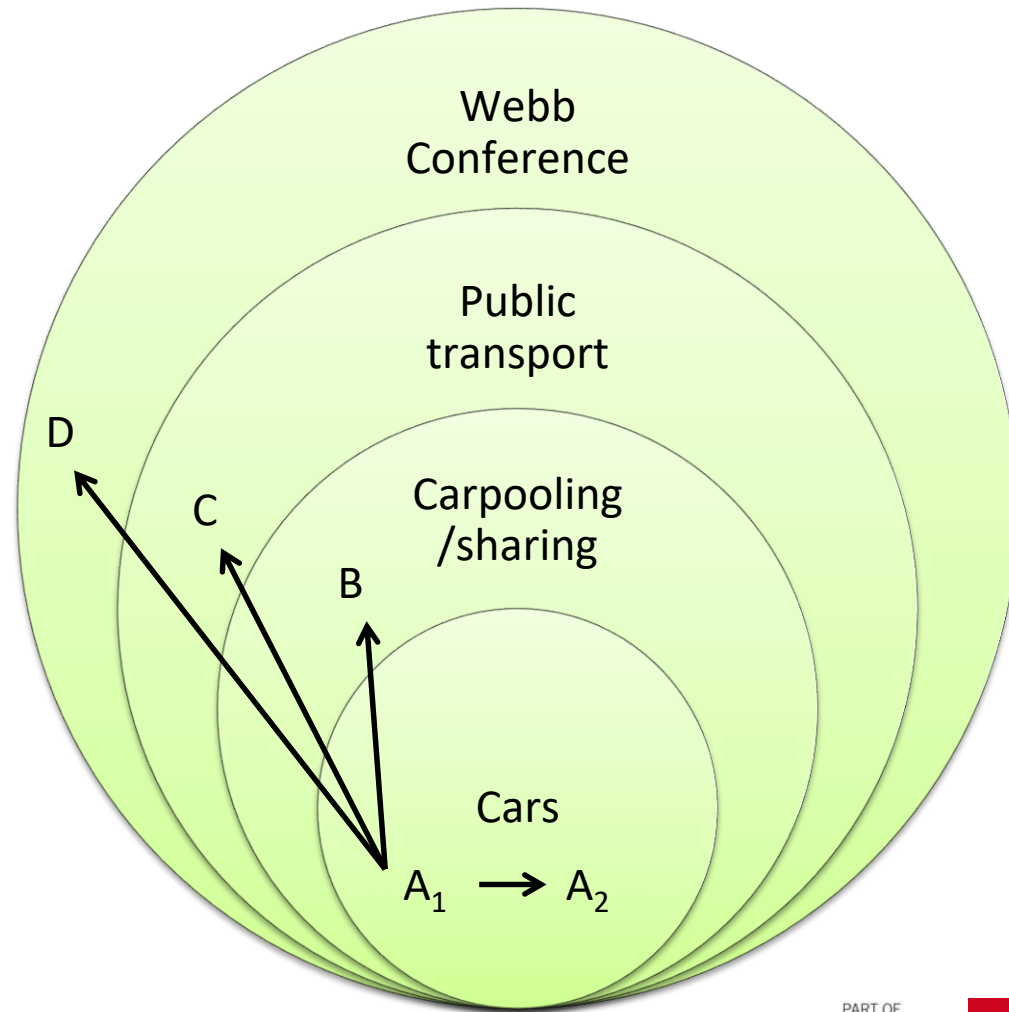


# Impact?





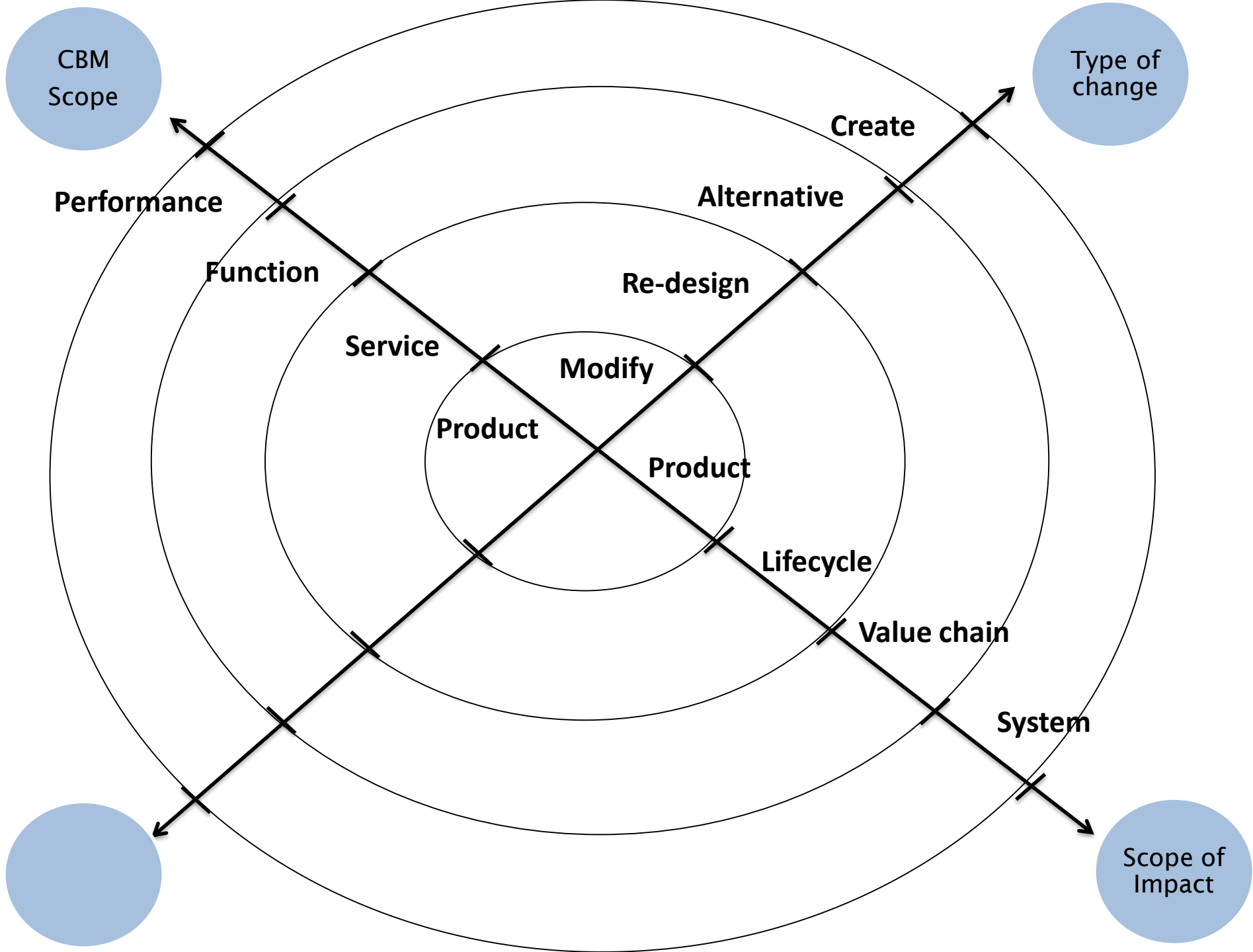
# What?



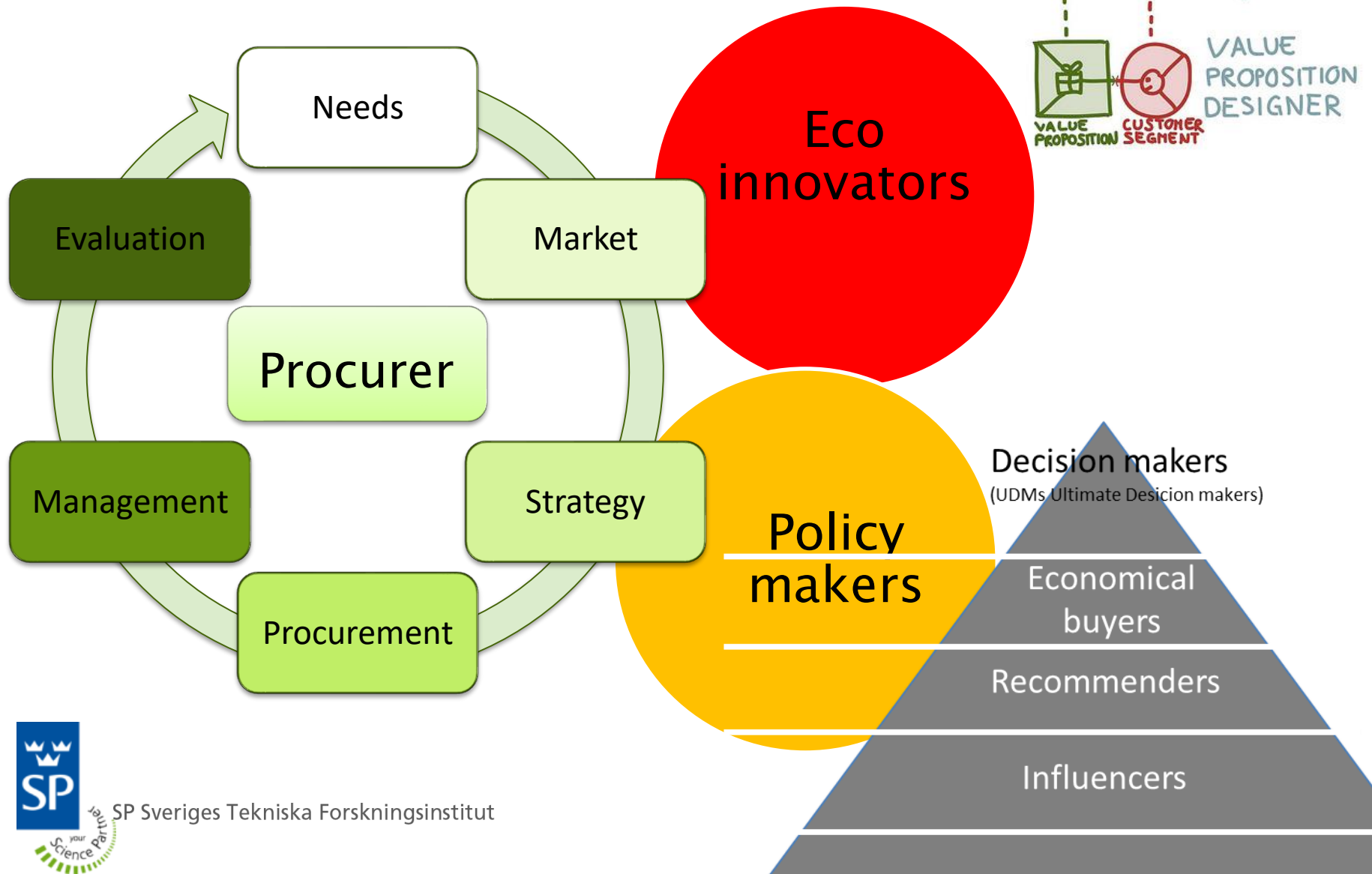
## Interviews (work in progress)

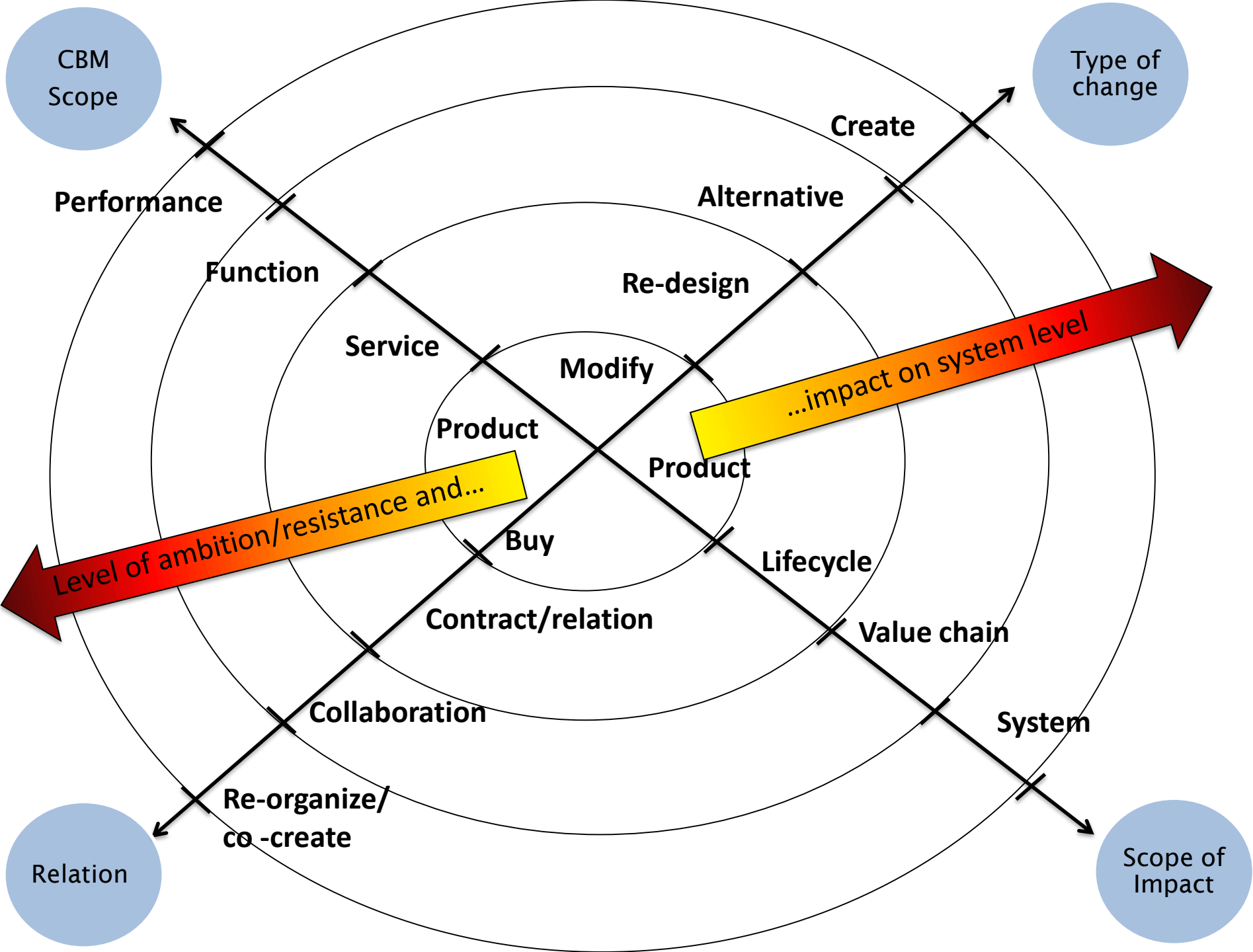
	Product	Service	Function	Performance
Needs	Low friction	Not assigned	Low friction	Not assigned
Market	Not assigned	Low friction	High friction	Not assigned
Strategy	Not assigned	Low friction	Medium friction	High friction
Procurement	Not assigned	High friction	Low friction	Low friction
Management	Low friction	Medium friction	High friction	Not assigned
Evaluation	Low friction	Low friction	High friction	Low friction

 High friction     Medium friction     Low friction     Not assigned



# How?







# TACK!

Fredric Norefjäll

RISE Transition LAB

Fredric.norefjall@ri.se

+46 (0)10 516 5990

+46 (0)70 616 57 80

Research Institutes of Sweden

**Samhällsbyggnad**

**Energi & Cirkulär Ekonomi**

